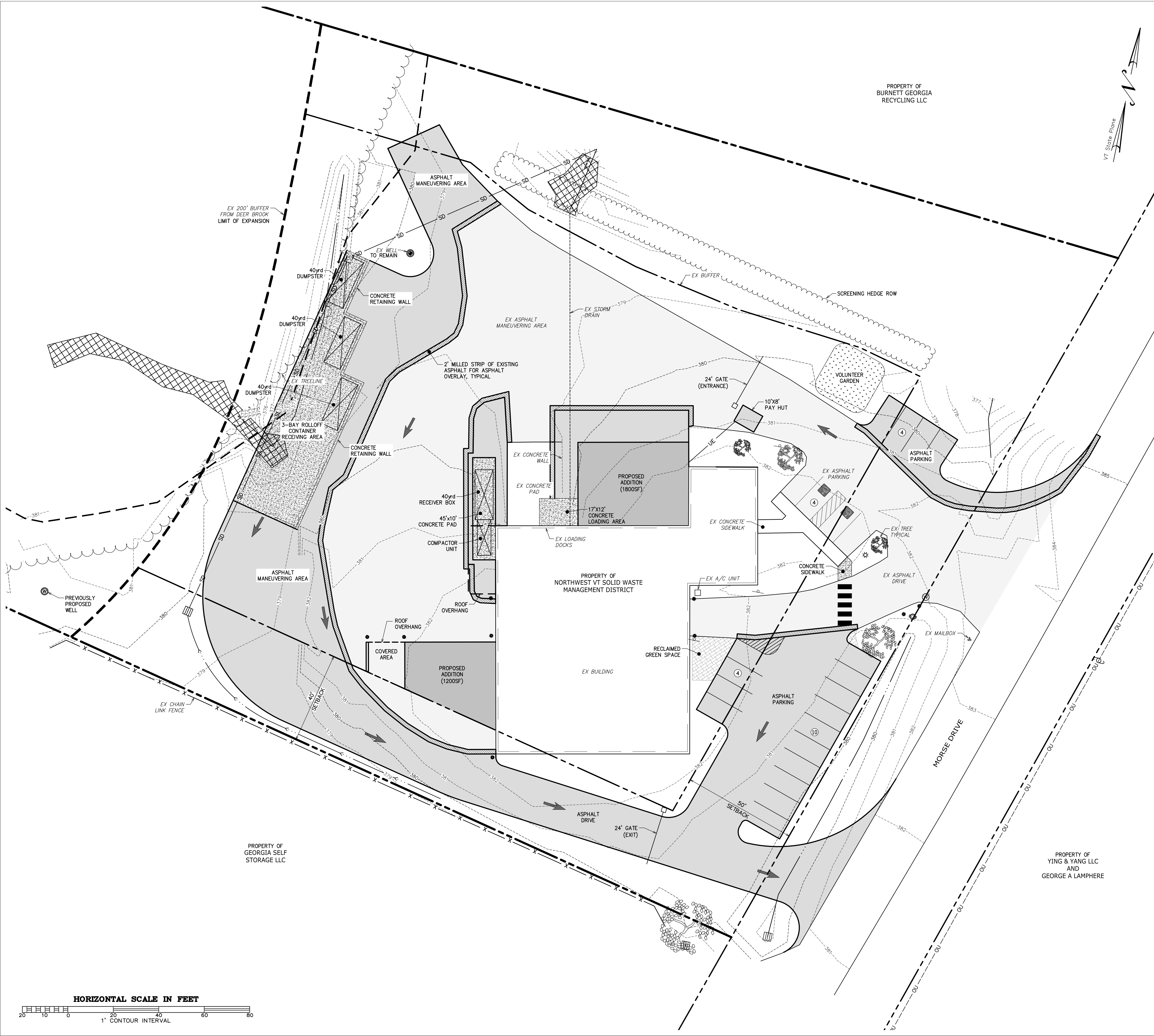


Q:\2020 Drawings\20001 - NWS\WD - Georgia\Current\Conceptual\C-1 Concept 3.dwg Plotted: 2/1/2023 8:50:47 AM



LEGEND		
	EXISTING	PROPOSED
DRAINAGE MANHOLE		
CATCH BASIN		
END SECTION		
SEWER MANHOLE		
SEWER CLEANOUT		
HYDRANT		
END CAP		
CURB STOP		
GATE VALVE		
WELL		
UTILITY POLE		
GUY WIRE		
LIGHT POLE		
WALL PACK LIGHT		
TRANSFORMER BOX		
TELEPHONE BOX		
ELEVATION BENCHMARK		
PROPERTY LINE		
RIGHT-OF-WAY		
CENTERLINE OF ROAD		
STORMDRAIN		
UNDERDRAIN		
GRAVITY SANITARY SEWER		
PRESSURE SANITARY SEWER		
WATER MAIN/SERVICE		
GAS MAIN/SERVICE		
OVERHEAD UTILITY		
UNDERGROUND UTILITY		
OVERHEAD ELECTRICAL		
UNDERGROUND ELECTRICAL		
OVERHEAD TELEPHONE		
UNDERGROUND TELEPHONE		
STREAM/DRAINAGE SWALE		
WETLAND DELINEATION		
WETLAND BUFFER		
EDGE OF WOODS		
CONTOURS		

NOTE: LEGEND MAY INCLUDE SYMBOLS AND LINES NOT RELEVANT TO THIS PROJECT



PROJECT: 20001  
 DATE: April 5, 2022  
 DESIGN: PJG  
 DRAWN: CHW  
 CHECKED: PHC  
 APPROVED: PHC

CC E CROSS  
 CONSULTING ENGINEERS, P.C.  
 103 Fairfax Rd.  
 St. Albans, Vermont 05478  
 © COPYRIGHT 2023  
 Cross Consulting Engineers, P.C.

Concept 3

Northwest VT Solid Waste Management District  
 Georgia, VT  
 Expansion Project  
 Morse Drive  
 Georgia, VT

CONCEPT

C-1

PRELIMINARY